

**Mark W Bills Middle School**  
**Peoria SD 150**  
**Peoria, ILLINOIS**



**ILLINOIS**  
**SCHOOL**  
**REPORT**  
**CARD**

**GRADES : 5 6 7 8**

State and federal laws require public school districts to release report cards to the public each year.

This year, we have updated the report card to provide a full picture of school performance beyond just test scores. A display of this data designed with parents and communities in mind is available on [illinoisreportcard.com](http://illinoisreportcard.com). All of the metrics posted on [illinoisreportcard.com](http://illinoisreportcard.com) are also included in this report.

**STUDENTS**

RACIAL/ETHNIC BACKGROUND AND OTHER INFORMATION												
	White	Black	Hispanic	Asian	Native Hawaiian /Pacific Islander	American Indian	Two or More Races	Percent Low-Income	Percent Limited-English-Proficient	Percent IEP	Percent Homeless	Total Enrollment
<b>School</b>	29.8	53.5	4.7	2.8	0.0	0.0	9.3	63.7	0.5	19.1	4.7	215
<b>District</b>	23.3	56.5	9.9	1.6	0.2	0.4	8.1	75.4	5.3	17.0	3.0	13,675
<b>State</b>	49.3	17.5	25.1	4.6	0.1	0.3	3.1	54.2	10.3	14.1	2.3	2,054,556

**Low-income** students come from families receiving public aid; live in institutions for neglected or delinquent children; are supported in foster homes with public funds; or are eligible to receive free or reduced-price lunches. IEP Students are those students eligible to receive special education services.

**Limited-English-proficient** students are those students eligible for transitional bilingual programs. **Total Enrollment** is based on Home School.

**Homeless** students are who do not have permanent and adequate homes.

	High Sch. Dropout Rate	Chronic Truancy Rate	Mobility Rate	Attendance Rate
<b>School</b>		9.7	19.4	94.0
<b>District</b>		17.6	21.1	91.8
<b>State</b>		8.7	12.0	94.2

**Mobility rate** is based on the number of times students enroll in or leave a school during the school year.

**Chronic truants** are students who are absent from school without valid cause for 9 or more of the last 180 school days.

**INSTRUCTIONAL SETTING**

PARENTAL CONTACT*	
	Percent
<b>School</b>	100.0
<b>District</b>	100.0
<b>State</b>	95.2

TOTAL SCHOOL DAYS	
	Days
<b>School</b>	174
<b>District</b>	174
<b>State</b>	175

8TH GRADERS PASSING ALGEBRA I **	
<b>School</b>	0.0
<b>District</b>	18.5
<b>State</b>	28.4

\*\* For the 8th graders passing algebra I, if the percentage is 0, it means that an Algebra I course is not offered.

\* Parental contact includes parent-teacher conferences, parental visits to school, school visits to home, telephone conversations, and written correspondence.

STUDENT-TO-STAFF RATIOS			
Pupil-Teacher Elementary	Pupil-Teacher Secondary	Pupil-Certified Staff	Pupil-Administrator
--	--	--	--
16.2	16.6	11.3	163.6
18.5	18.4	11.3	173.3

AVERAGE CLASS SIZE (as of the first school day in May)											
Grades	K	1	2	3	4	5	6	7	8	9 - 12	Overall
School						18.7	21.0	25.0	25.0		22.7
District						22.3	23.0	22.8	22.9		20.4
State						23.1	22.7	21.8	22.2		21.2

TIME DEVOTED TO TEACHING CORE SUBJECTS (Minutes Per Day)												
Grades	Mathematics			Science			English/Language Arts			Social Science		
	3	6	8	3	6	8	3	6	8	3	6	8
School		80	80		40	40		80	80		40	40
District		84	83		39	38		91	88		39	38
State		58	55		44	46		100	89		43	45

TEACHER INFORMATION (Full-Time Equivalents)												
	White	Black	Hispanic	Asian	Native Hawaiian/ Pacific islander	American Indian	Two or More Races	Unknown	Male	Female	Total Number	
												District
State	82.5	6.4	5.7	1.4	0.1	0.2	0.8	3.0	23.2	76.8	129,668	

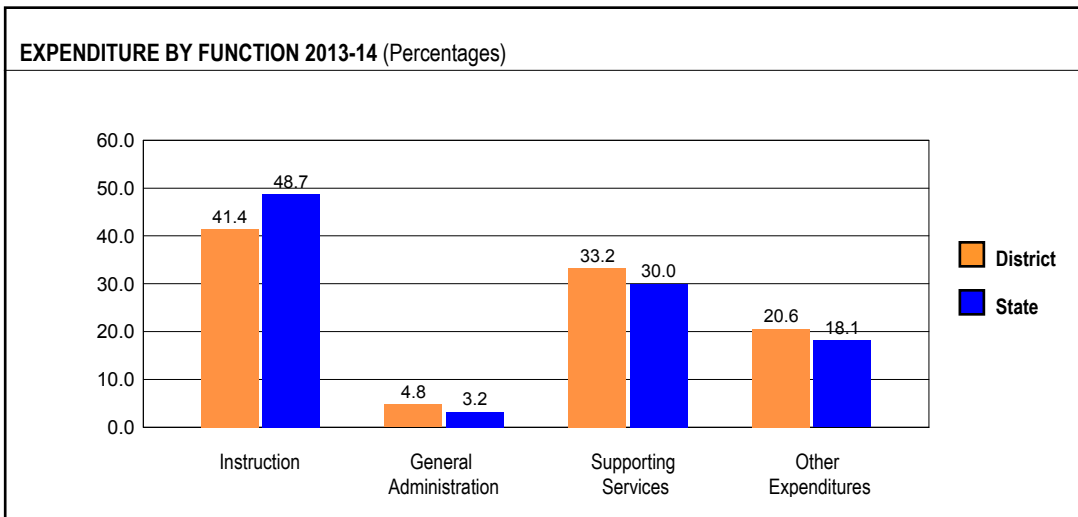
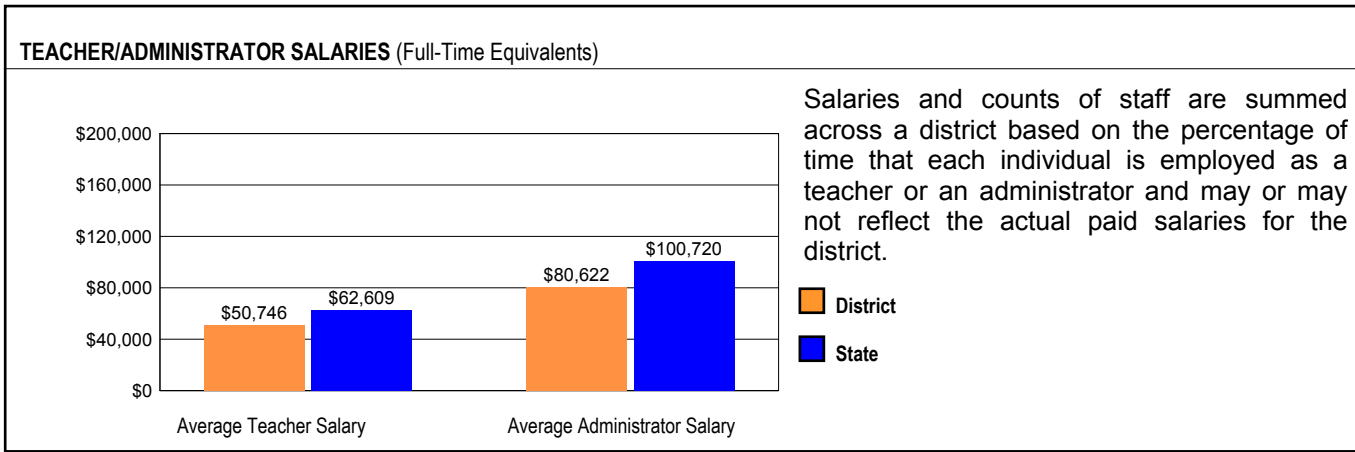
TEACHER INFORMATION (Continued)					
	Average Teaching Experience (Years)	% of Teachers with Bachelor's Degrees	% of Teachers with Master's & Above	% of Teachers with Emergency or Provisional Credentials	% of Classes Not Taught by Highly Qualified Teachers
School	--	--	--	5.8	0.0
District		48.2	50.9	1.2	1.7
State		38.4	61.1	0.6	0.8

Some teacher/administrator data are not collected at the school level.

The No Child Left Behind Act requires that information for certain data elements be disaggregated by high- and low-poverty schools. Poverty (low-income) is defined on page 1 of all report cards. High- and low-poverty schools include those in the top and bottom quarters of the poverty distribution of schools in the state.

TEACHER RETENTION RATE		PRINCIPAL TURNOVER (Count)	
School	64.2	School	2.0
District	78.3	District	2.5
State	85.0	State	1.9

## SCHOOL DISTRICT FINANCES



**REVENUE BY SOURCE 2013-14**

	District	District %	State %
Local Property Taxes	\$78,081,715	45.2	61.7
Other Local Funding	\$7,490,951	4.3	4.4
General State Aid	\$44,578,285	25.8	16.4
Other State Funding	\$16,328,619	9.4	9.6
Federal Funding	\$26,320,594	15.2	7.8
<b>TOTAL</b>	<b>\$172,800,164</b>		

**EXPENDITURE BY FUND 2013-14**

	District	District %	State %
Education	\$127,497,887	65.8	73.4
Operations & Maintenance	\$13,076,033	6.7	6.3
Transportation	\$8,932,238	4.6	3.7
Debt Service	\$15,775,214	8.1	8.0
Tort	\$6,305,295	3.3	1.2
Municipal Retirement/ Social Security	\$6,487,408	3.3	2.1
Fire Prevention & Safety	\$486,678	0.3	0.5
Capital Projects	\$15,255,878	7.9	4.7
<b>TOTAL</b>	<b>\$193,816,631</b>		

**OTHER FINANCIAL INDICATORS**

	2012 Equalized Assessed Valuation per Pupil	2012 Total School Tax Rate per \$100	2013-14 Instructional Expenditure per Pupil	2013-14 Operating Expenditure per Pupil
District	\$116,614	4.98	\$6,979	\$13,662
State	**	**	\$7,419	\$12,521

\*\* Due to the way Illinois school districts are configured, state averages for equalized assessed valuation per pupil and total school tax rate per \$100 are not provided.

Equalized assessed valuation includes all computed property values upon which a district's local tax rate is calculated.

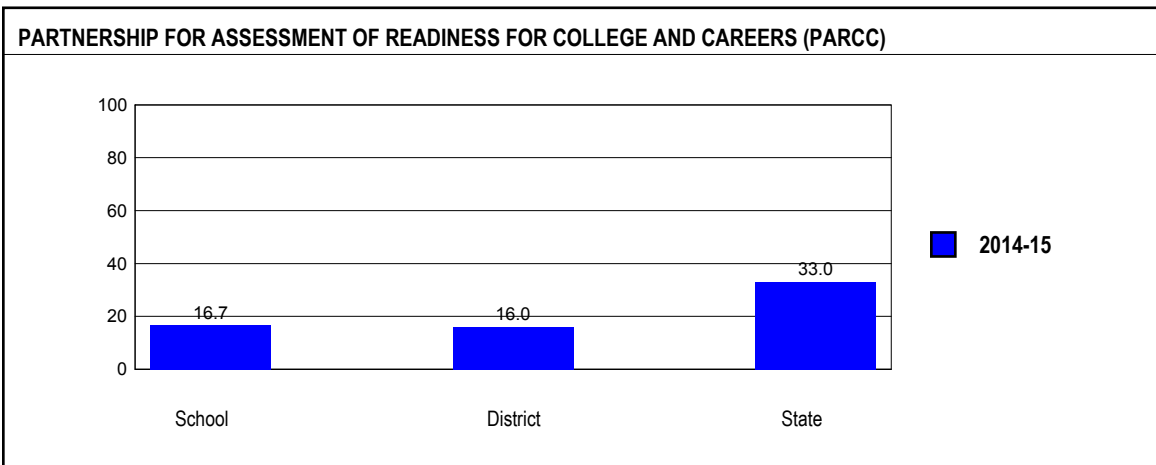
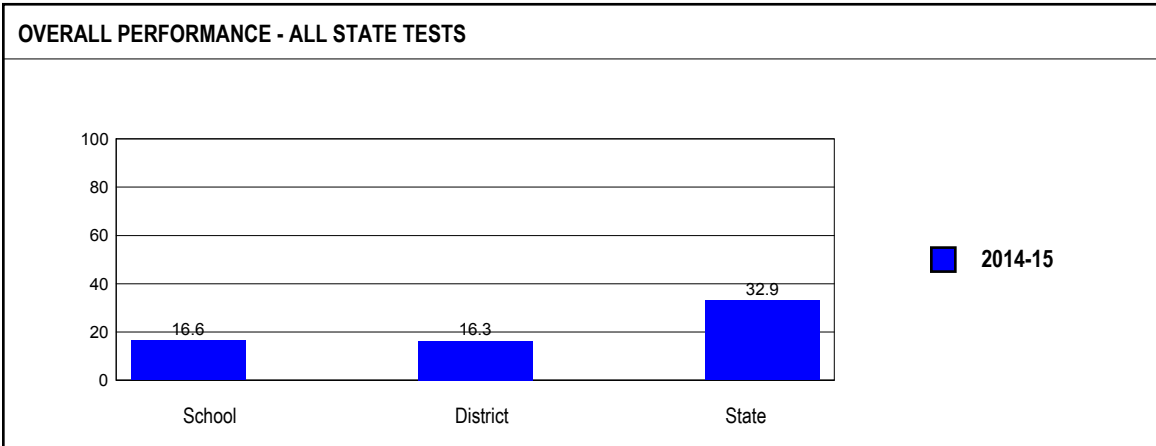
Total school tax rate is a district's total tax rate as it appears on local property tax bills.

Instructional expenditure per pupil includes the direct costs of teaching pupils or the interaction between teachers and pupils.

Operating expenditure per pupil includes the gross operating cost of a school district excluding summer school, adult education, bond principal retired, and capital expenditures.

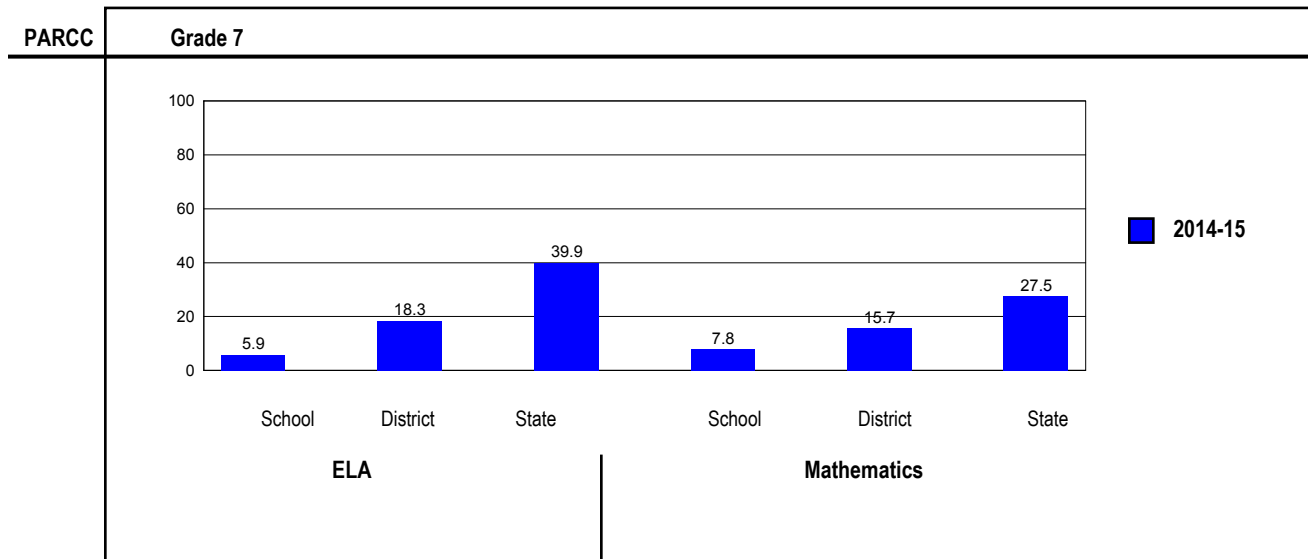
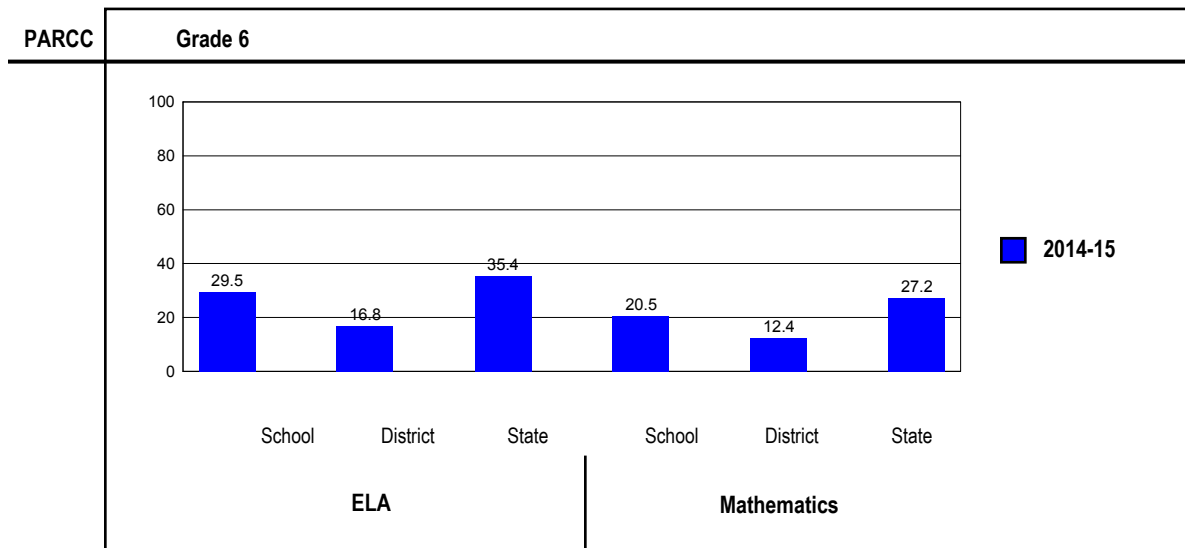
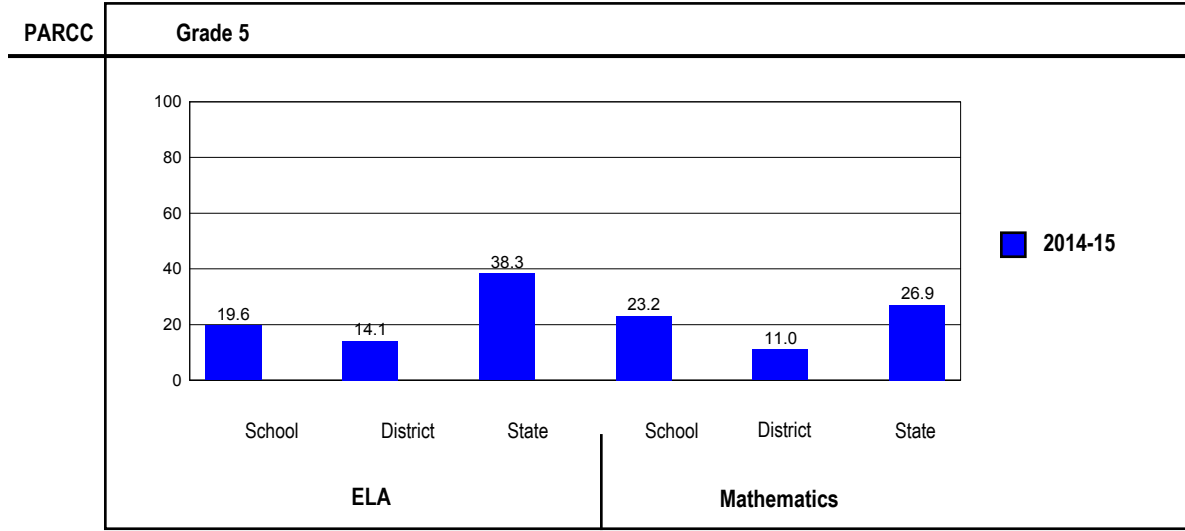
**ACADEMIC PERFORMANCE****OVERALL STUDENT PERFORMANCE**

These charts present the overall percentage of state test scores categorized as meeting or exceeding the PARCC expectations or DLM-AA Standards for your district, and the state.



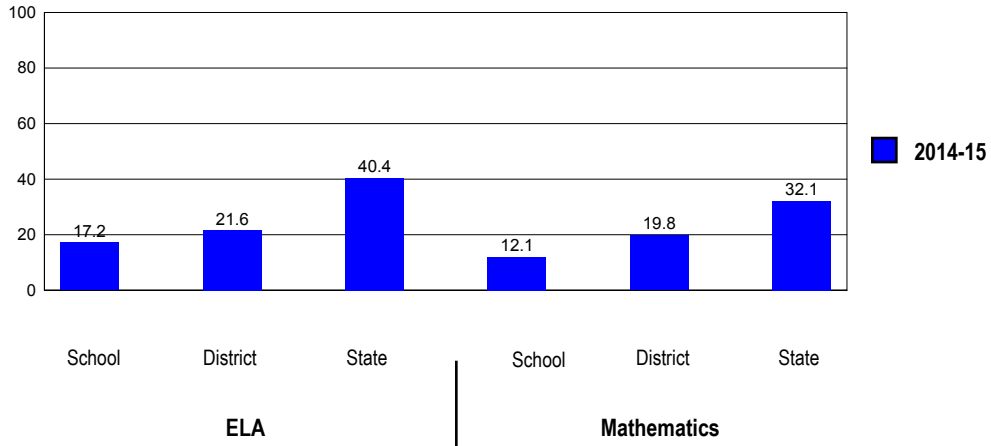
**PARCC PERFORMANCE**

These charts present the overall percentage of state test scores categorized as meeting or exceeding the PARCC expectations or DLM-AA Standards for your district, and the state.



PARCC

Grade 8



## PERFORMANCE ON STATE ASSESSMENTS

The PARCC is administered to students in grade 3 through 8 and high school. The DLM-AA is administered to students in grade 3 through 8 and 11 with disabilities whose Individualized Education Programs (IEPs) indicate that participation in the PARCC would not be appropriate.

Students with disabilities have an IEP (No Child Left Behind Act). An IEP is a written plan for a child with a disability who is eligible to receive special education services under the Individuals with Disabilities Education Act.

In order to protect students' identities, test data for groups of fewer than ten students are not reported.

PERCENTAGE OF STUDENTS NOT TESTED IN STATE TESTING PROGRAMS FOR ELA															
		Gender			Racial/Ethnic Background							LEP	Migrant	Students with Disabilities	Economically Disadvantaged
		All	Male	Female	White	Black	Hispanic	Asian	Native Hawaiian/Pacific Islander	American Indian	Two or More Races				
School	*Enrollment	213	111	102	63	115	10	6	0	0	19	1	0	40	135
	Reading	0.9	0.0	2.0	1.6	0.0	0.0				5.3			0.0	0.7
District	*Enrollment	6,853	3,566	3,287	1,558	3,876	693	115	10	24	577	303	10	1,125	5,047
	Reading	4.6	4.8	4.4	3.6	5.3	4.6	3.5	0.0	0.0	2.9	4.3	10.0	5.9	4.4
State	*Enrollment	1,051,644	539,225	512,413	519,457	180,273	267,111	48,402	1,065	3,047	32,282	80,472	208	147,514	562,211
	Reading	4.4	4.4	4.4	3.6	6.4	4.9	3.1	5.4	5.1	4.5	4.0	1.4	6.7	4.8

\* Enrollment as reported during the testing windows for grades 3 - 8 and high school.

Number of LEP Students who have attended schools in the U.S. for less than 12 months and are not assessed on the State's reading/language arts test: 0

PERCENTAGE OF STUDENTS NOT TESTED IN STATE TESTING PROGRAMS FOR MATHEMATICS															
		Gender			Racial/Ethnic Background							LEP	Migrant	Students with Disabilities	Economically Disadvantaged
		All	Male	Female	White	Black	Hispanic	Asian	Native Hawaiian/Pacific Islander	American Indian	Two or More Races				
School	*Enrollment	213	110	103	63	115	10	6	0	0	19	1	0	40	135
	Mathematics	0.9	0.0	1.9	1.6	0.0	0.0				5.3			0.0	0.7
District	*Enrollment	6,650	3,462	3,188	1,510	3,762	672	116	9	25	556	300	12	1,063	4,914
	Mathematics	3.1	3.2	3.0	2.3	3.5	3.3	2.6		8.0	2.3	2.3	16.7	3.2	3.0
State	*Enrollment	1,030,870	528,245	502,619	503,821	178,766	265,694	47,031	1,068	2,998	31,485	84,309	222	144,880	557,528
	Mathematics	4.4	4.4	4.3	3.4	6.5	5.0	2.8	5.8	4.5	4.3	4.6	4.5	6.6	4.7

\* Enrollment as reported during the testing windows for grades 3 - 8 and high school.

## Partnership for Assessment of Readiness for College and Careers (PARCC)

Each Performance Level is a broad, categorical level defined by a student's overall scale score and used to report overall student performance by describing how well students met the expectations for their grade level/course. Each Performance Level is defined by a range of overall scale scores for the assessment. There are five Performance Levels for PARCC assessments:

- Level 1: Did not yet meet expectations
- Level 2: Partially met expectations
- Level 3: Approached expectations
- Level 4: Met expectations
- Level 5: Exceeded expectations

Students performing at levels 4 and 5 met or exceeded expectations, have demonstrated readiness for the next grade level/course and, ultimately, are on track for college and careers. Performance Level Descriptors (PLDs) describe the knowledge, skills, and practices that students should know and be able to demonstrate at each Performance Level in each content area (ELA/L and mathematics), and at each grade level/course. PLDs are available at <http://avocet.pearson.com/PARCC/Home>.

### Grade 5

#### Grade 5 - All

Levels	ELA					Mathematics				
	1	2	3	4	5	1	2	3	4	5
School	26.8	26.8	26.8	19.6	0.0	10.7	33.9	32.1	21.4	1.8
District	30.3	31.3	24.3	12.9	1.2	29.8	36.6	22.6	10.6	0.4
State	10.8	21.4	29.4	35.6	2.7	13.2	30.2	29.7	23.6	3.3

#### Grade 5 - Gender

Levels	ELA					Mathematics					
	1	2	3	4	5	1	2	3	4	5	
Male	School	32.3	22.6	22.6	22.6	0.0	12.9	38.7	25.8	19.4	3.2
	District	36.0	31.8	20.7	10.7	0.8	32.7	36.5	20.9	9.1	0.8
	State	13.4	23.9	29.7	31.4	1.6	14.9	30.6	28.0	22.9	3.7
Female	School	20.0	32.0	32.0	16.0	0.0	8.0	28.0	40.0	24.0	0.0
	District	24.7	30.8	27.8	15.1	1.6	26.9	36.7	24.3	12.2	0.0
	State	8.1	18.9	29.2	40.0	3.9	11.5	29.8	31.4	24.3	3.0



**Grade 5 - Racial/Ethnic Background**

Levels	ELA					Mathematics					
	1	2	3	4	5	1	2	3	4	5	
White	School	13.3	26.7	20.0	40.0	0.0	6.7	13.3	40.0	33.3	6.7
	District	13.9	24.9	26.8	30.1	4.3	14.8	22.0	32.1	29.2	1.9
	State	6.9	16.7	29.4	43.7	3.4	8.3	24.9	32.3	30.4	4.1
Black	School	36.4	27.3	27.3	9.1	0.0	15.2	42.4	27.3	15.2	0.0
	District	38.9	34.7	20.5	5.9	0.0	39.3	41.0	15.7	4.0	0.0
	State	19.4	30.7	29.2	20.0	0.8	25.5	40.7	23.9	9.3	0.5
Hispanic	School										
	District	21.4	29.9	34.2	12.8	1.7	13.7	41.9	33.3	11.1	0.0
	State	14.3	27.2	31.4	25.9	1.2	16.8	37.2	29.7	15.4	0.9
Asian	School										
	District										
	State	3.9	8.6	21.1	56.2	10.2	3.2	11.7	22.9	44.6	17.5
Native Hawaiian/Pacific Islander	School										
	District										
	State	6.1	7.8	28.7	52.2	5.2	4.3	20.5	31.6	37.6	6.0
American Indian	School										
	District										
	State	15.8	20.8	28.3	33.0	2.1	12.4	36.1	31.7	18.6	1.3
Two or More Races	School	23.6	27.8	31.9	15.3	1.4	26.0	34.2	32.9	6.8	0.0
	District	9.2	20.5	27.8	39.0	3.5	12.1	29.6	28.4	25.1	4.8
	State										

**Grade 5 - Students with Disabilities**

Levels	ELA					Mathematics					
	1	2	3	4	5	1	2	3	4	5	
IEP	School	54.5	18.2	9.1	18.2	0.0	18.2	63.6	0.0	9.1	9.1
	District	73.1	22.8	2.1	2.1	0.0	54.8	39.7	4.1	0.7	0.7
	State	38.3	35.3	17.9	8.1	0.3	34.8	41.7	16.7	6.2	0.6
Non-IEP	School	20.0	28.9	31.1	20.0	0.0	8.9	26.7	40.0	24.4	0.0
	District	23.1	32.8	28.0	14.8	1.4	25.6	36.0	25.7	12.3	0.3
	State	6.6	19.3	31.2	39.8	3.1	9.9	28.4	31.7	26.2	3.8

**Grade 5 - Economically Disadvantaged**

Levels	ELA					Mathematics					
	1	2	3	4	5	1	2	3	4	5	
Free/Reduced Price Lunch	School	35.9	33.3	20.5	10.3	0.0	15.4	41.0	28.2	15.4	0.0
	District	34.4	34.1	23.5	7.8	0.3	34.3	40.3	20.0	5.5	0.0
	State	16.0	28.4	31.1	23.5	0.9	19.5	38.4	27.9	13.4	0.8
Not Eligible	School	5.9	11.8	41.2	41.2	0.0	0.0	17.6	41.2	35.3	5.9
	District	15.8	21.6	27.0	31.1	4.5	14.3	23.7	31.7	28.6	1.8
	State	4.5	13.0	27.4	50.2	4.9	5.6	20.3	31.9	35.8	6.4

**Grade 6****Grade 6 - All**

Levels	ELA					Mathematics				
	1	2	3	4	5	1	2	3	4	5
School	15.9	15.9	38.6	27.3	2.3	11.4	36.4	31.8	20.5	0.0
District	26.2	32.1	24.9	14.5	2.3	30.4	37.3	19.9	11.4	1.0
State	11.4	21.6	31.6	31.2	4.2	12.7	29.7	30.5	24.0	3.2

**Grade 6 - Gender**

Levels	ELA					Mathematics					
	1	2	3	4	5	1	2	3	4	5	
Male	School	20.8	20.8	29.2	29.2	0.0	12.5	37.5	33.3	16.7	0.0
	District	35.2	28.4	23.5	12.4	0.6	31.9	37.7	19.8	9.6	1.1
	State	14.8	24.9	31.8	25.9	2.6	14.3	30.1	29.0	23.2	3.4
Female	School	10.0	10.0	50.0	25.0	5.0	10.0	35.0	30.0	25.0	0.0
	District	16.7	36.0	26.5	16.7	4.1	28.9	36.8	20.0	13.4	0.9
	State	7.8	18.2	31.4	36.8	5.8	11.0	29.2	32.0	24.8	2.9

**Grade 6 - Racial/Ethnic Background**

Levels	ELA					Mathematics					
	1	2	3	4	5	1	2	3	4	5	
White	School	8.3	25.0	50.0	16.7	0.0	8.3	8.3	66.7	16.7	0.0
	District	13.8	24.0	25.5	29.1	7.7	12.8	26.0	27.6	30.6	3.1
	State	6.4	16.6	32.2	39.2	5.5	7.4	23.5	33.5	31.7	4.0
Black	School	27.3	18.2	31.8	22.7	0.0	13.6	59.1	22.7	4.5	0.0
	District	33.3	36.5	21.9	8.3	0.0	40.9	41.4	15.6	2.1	0.0
	State	23.0	31.9	28.9	15.3	1.0	25.6	41.1	24.3	8.7	0.4
Hispanic	School	15.2	33.7	37.0	12.0	2.2	11.8	48.4	24.7	15.1	0.0
	District	15.0	27.2	34.2	22.2	1.4	16.3	37.6	30.3	15.0	0.7
	State										
Asian	School	8.3	0.0	25.0	58.3	8.3	15.4	7.7	23.1	46.2	7.7
	District	3.4	8.4	21.5	51.5	15.3	3.1	10.7	22.6	45.8	17.8
	State										
Native Hawaiian/Pacific Islander	School										
	District										
	State	5.5	15.1	37.0	37.0	5.5	8.8	25.2	28.6	34.0	3.4
American Indian	School										
	District										
	State	12.3	20.9	35.2	28.2	3.4	13.5	33.6	31.5	19.1	2.3
Two or More Races	School	26.3	26.3	28.9	14.5	3.9	30.3	30.3	23.7	13.2	2.6
	District	9.7	20.4	30.4	33.7	5.9	12.0	29.2	28.8	25.4	4.6
	State										

**Grade 6 - Economically Disadvantaged**

Levels	ELA					Mathematics					
	1	2	3	4	5	1	2	3	4	5	
Free/Reduced Price Lunch	School	22.2	18.5	33.3	22.2	3.7	11.1	40.7	25.9	22.2	0.0
	District	30.8	32.9	25.6	10.0	0.7	35.5	39.2	17.8	7.5	0.0
	State	17.4	28.7	32.7	20.0	1.3	19.1	38.5	28.6	13.2	0.7
Not Eligible	School	5.9	11.8	47.1	35.3	0.0	11.8	29.4	41.2	17.6	0.0
	District	11.9	29.2	22.8	28.8	7.3	14.6	31.1	26.5	23.7	4.1
	State	4.3	13.3	30.3	44.6	7.6	5.1	19.2	32.7	36.8	6.2

**Grade 7****Grade 7 - All**

Levels	ELA					Mathematics				
	1	2	3	4	5	1	2	3	4	5
School	33.3	29.4	31.4	5.9	0.0	25.5	35.3	31.4	5.9	2.0
District	34.9	27.2	19.6	15.2	3.1	24.2	37.6	22.5	13.8	2.0
State	14.3	19.0	26.9	30.5	9.4	9.8	28.4	34.3	24.6	2.9

**Grade 7 - Gender**

Levels	ELA					Mathematics					
	1	2	3	4	5	1	2	3	4	5	
Male	School	32.1	35.7	25.0	7.1	0.0	25.0	28.6	32.1	10.7	3.6
	District	43.1	26.3	15.6	14.0	1.0	27.3	36.0	21.7	12.7	2.3
	State	18.8	21.7	27.2	26.1	6.2	11.5	28.7	32.6	24.0	3.3
Female	School	34.8	21.7	39.1	4.3	0.0	26.1	43.5	30.4	0.0	0.0
	District	25.7	28.3	24.1	16.6	5.4	20.8	39.3	23.4	15.0	1.6
	State	9.5	16.2	26.5	35.0	12.8	8.1	28.1	36.0	25.3	2.5

**Grade 7 - Racial/Ethnic Background**

Levels	ELA					Mathematics					
	1	2	3	4	5	1	2	3	4	5	
White	School	20.0	33.3	33.3	13.3	0.0	13.3	33.3	46.7	0.0	6.7
	District	18.0	19.0	21.5	33.7	7.8	9.7	20.9	32.0	32.5	4.9
	State	8.9	15.1	26.6	37.0	12.4	6.1	22.1	36.3	31.9	3.5
Black	School	46.4	25.0	25.0	3.6	0.0	35.7	35.7	25.0	3.6	0.0
	District	47.1	29.8	16.3	6.5	0.2	33.3	44.3	18.2	4.3	0.0
	State	27.3	27.6	26.1	17.0	2.1	19.6	41.9	28.8	9.5	0.2
Hispanic	School										
	District	19.5	35.6	26.4	18.4	0.0	18.0	42.7	25.8	12.4	1.1
	State	18.4	23.6	29.7	24.1	4.2	12.2	35.5	35.5	16.1	0.7
Asian	School										
	District	4.5	0.0	31.8	45.5	18.2	4.5	13.6	18.2	40.9	22.7
	State	4.7	7.3	17.8	41.4	28.8	2.9	10.7	25.2	44.5	16.7
Native Hawaiian/Pacific Islander	School										
	District										
	State	7.9	15.1	22.2	42.9	11.9	3.9	20.3	37.5	32.8	5.5
American Indian	School										
	District										
	State	15.9	20.5	31.1	27.2	5.3	9.7	32.5	39.0	17.3	1.4
Two or More Races	School										
	District	23.6	30.6	25.0	11.1	9.7	15.3	38.9	23.6	19.4	2.8
	State	12.9	17.8	25.5	31.1	12.7	9.6	27.2	32.6	25.8	4.8

**Grade 7 - Students with Disabilities**

Levels	ELA					Mathematics					
	1	2	3	4	5	1	2	3	4	5	
IEP	School	72.7	27.3	0.0	0.0	0.0	54.5	36.4	9.1	0.0	0.0
	District	79.6	15.0	2.7	2.7	0.0	57.8	33.3	8.2	0.7	0.0
	State	51.3	27.4	14.4	6.0	0.9	38.4	41.6	15.0	4.4	0.5
Non-IEP	School	22.5	30.0	40.0	7.5	0.0	17.5	35.0	37.5	7.5	2.5
	District	26.3	29.6	22.9	17.6	3.7	17.7	38.4	25.2	16.3	2.4
	State	8.8	17.8	28.7	34.1	10.6	5.6	26.4	37.1	27.6	3.3

**Grade 7 - Economically Disadvantaged**

Levels	ELA					Mathematics					
	1	2	3	4	5	1	2	3	4	5	
Free/Reduced Price Lunch	School	41.9	29.0	22.6	6.5	0.0	32.3	35.5	25.8	3.2	3.2
	District	40.3	30.6	19.0	9.7	0.3	28.6	42.9	20.9	7.4	0.3
	State	21.2	25.1	28.5	21.7	3.5	14.7	37.3	33.4	14.0	0.6
Not Eligible	School	20.0	30.0	45.0	5.0	0.0	15.0	35.0	40.0	10.0	0.0
	District	19.9	17.8	21.2	30.3	10.8	12.3	23.0	26.7	31.3	6.6
	State	6.5	12.3	25.1	40.2	16.0	4.4	18.4	35.3	36.5	5.5

**Grade 8****Grade 8 - All**

Levels	ELA					Mathematics				
	1	2	3	4	5	1	2	3	4	5
School	31.0	25.9	25.9	15.5	1.7	44.8	20.7	22.4	12.1	0.0
District	28.9	26.2	23.3	20.4	1.2	36.4	26.7	17.1	18.3	1.5
State	14.0	18.9	26.7	34.1	6.3	19.7	23.8	24.4	28.2	3.9

**Grade 8 - Gender**

Levels	ELA					Mathematics					
	1	2	3	4	5	1	2	3	4	5	
Male	School	57.7	23.1	11.5	7.7	0.0	64.0	12.0	20.0	4.0	0.0
	District	35.6	26.9	21.4	15.5	0.7	41.5	25.3	14.4	16.6	2.2
	State	18.6	21.9	27.2	28.4	3.9	22.5	24.0	23.0	26.4	4.2
Female	School	9.4	28.1	37.5	21.9	3.1	30.3	27.3	24.2	18.2	0.0
	District	22.1	25.4	25.2	25.4	1.8	31.2	28.1	19.8	20.0	0.9
	State	9.1	15.9	26.1	40.1	8.8	16.7	23.7	25.9	30.2	3.6

**Grade 8 - Racial/Ethnic Background**

Levels	ELA					Mathematics					
	1	2	3	4	5	1	2	3	4	5	
White	School	15.8	21.1	26.3	36.8	0.0	21.1	21.1	42.1	15.8	0.0
	District	13.7	17.5	26.4	40.1	2.4	20.6	18.2	20.1	38.3	2.8
	State	8.8	15.2	26.3	41.4	8.3	12.9	20.1	26.4	35.9	4.7
Black	School	48.4	29.0	16.1	3.2	3.2	61.3	19.4	12.9	6.5	0.0
	District	39.0	31.0	20.9	8.7	0.4	48.0	29.9	15.5	6.4	0.2
	State	26.9	27.3	26.6	17.9	1.2	37.7	30.6	20.0	11.3	0.4
Hispanic	School										
	District	23.1	32.1	24.4	20.5	0.0	29.1	36.7	15.2	19.0	0.0
	State	17.6	23.3	29.3	27.3	2.5	24.1	29.2	24.9	20.6	1.2
Asian	School										
	District	0.0	0.0	42.9	52.4	4.8	4.8	4.8	19.0	47.6	23.8
	State	4.6	7.6	17.5	48.5	21.8	5.4	10.8	17.2	46.0	20.5
Native Hawaiian/Pacific Islander	School										
	District										
	State	12.1	14.3	22.9	37.1	13.6	18.9	17.5	24.5	28.7	10.5
American Indian	School										
	District										
	State	15.2	25.5	29.3	26.3	3.8	21.0	31.1	25.8	20.7	1.5
Two or More Races	School										
	District	20.2	21.3	23.6	32.6	2.2	22.7	26.1	19.3	30.7	1.1
	State	12.9	17.2	25.6	35.4	9.0	18.5	24.0	22.5	29.9	5.1

**Grade 8 - Students with Disabilities**

Levels	ELA					Mathematics					
	1	2	3	4	5	1	2	3	4	5	
IEP	School	80.0	20.0	0.0	0.0	0.0	80.0	20.0	0.0	0.0	0.0
	District	73.4	20.1	6.5	0.0	0.0	80.6	15.8	2.9	0.7	0.0
	State	50.5	28.0	14.7	6.3	0.5	57.7	26.5	10.4	4.8	0.5
Non-IEP	School	20.8	27.1	31.3	18.8	2.1	37.5	20.8	27.1	14.6	0.0
	District	20.9	27.2	26.3	24.1	1.4	28.4	28.6	19.7	21.5	1.8
	State	8.9	17.7	28.3	37.9	7.1	14.4	23.5	26.4	31.5	4.3

**Grade 8 - Economically Disadvantaged**

Levels	ELA					Mathematics					
	1	2	3	4	5	1	2	3	4	5	
Free/Reduced Price Lunch	School	38.9	30.6	16.7	11.1	2.8	52.8	25.0	16.7	5.6	0.0
	District	34.2	28.9	21.5	14.7	0.8	43.2	29.3	16.7	10.3	0.5
	State	20.9	24.8	28.2	23.9	2.1	28.6	29.6	23.4	17.5	1.0
Not Eligible	School	18.2	18.2	40.9	22.7	0.0	31.8	13.6	31.8	22.7	0.0
	District	15.8	19.3	27.8	34.7	2.3	19.3	20.1	18.1	38.2	4.2
	State	6.4	12.5	24.9	45.3	10.9	9.9	17.5	25.5	40.0	7.0