

Lincoln School
Peoria SD 150
Peoria, ILLINOIS



ILLINOIS
SCHOOL
REPORT
CARD

GRADES : K 1 2 3 4 5 6 7 8

State and federal laws require public school districts to release report cards to the public each year.

This year, we have updated the report card to provide a full picture of school performance beyond just test scores. A display of this data designed with parents and communities in mind is available on illinoisreportcard.com. All of the metrics posted on illinoisreportcard.com are also included in this report.

STUDENTS

RACIAL/ETHNIC BACKGROUND AND OTHER INFORMATION												
	White	Black	Hispanic	Asian	Native Hawaiian /Pacific Islander	American Indian	Two or More Races	Percent Low-Income	Percent Limited-English-Proficient	Percent IEP	Percent Homeless	Total Enrollment
School	10.4	65.2	17.6	0.0	0.0	0.2	6.6	92.4	12.4	16.8	6.8	876
District	23.3	56.5	9.9	1.6	0.2	0.4	8.1	75.4	5.3	17.0	3.0	13,675
State	49.3	17.5	25.1	4.6	0.1	0.3	3.1	54.2	10.3	14.1	2.3	2,054,556

Low-income students come from families receiving public aid; live in institutions for neglected or delinquent children; are supported in foster homes with public funds; or are eligible to receive free or reduced-price lunches.
IEP Students are those students eligible to receive special education services.

Limited-English-proficient students are those students eligible for transitional bilingual programs.
Total Enrollment is based on **Home School**.
Homeless students are who do not have permanent and adequate homes.

	High Sch. Dropout Rate	Chronic Truancy Rate	Mobility Rate	Attendance Rate
School		28.4	34.5	91.4
District		17.6	21.1	91.8
State		8.7	12.0	94.2

Mobility rate is based on the number of times students enroll in or leave a school during the school year.

Chronic truants are students who are absent from school without valid cause for 9 or more of the last 180 school days.

INSTRUCTIONAL SETTING

PARENTAL CONTACT*	
	Percent
School	100.0
District	100.0
State	95.2

TOTAL SCHOOL DAYS	
	Days
School	174
District	174
State	175

8TH GRADERS PASSING ALGEBRA I **	
	Percent
School	26.6
District	18.5
State	28.4

** For the 8th graders passing algebra I, if the percentage is 0, it means that an Algebra I course is not offered.

* Parental contact includes parent-teacher conferences, parental visits to school, school visits to home, telephone conversations, and written correspondence.

STUDENT-TO-STAFF RATIOS			
Pupil-Teacher Elementary	Pupil-Teacher Secondary	Pupil-Certified Staff	Pupil-Administrator
--	--	--	--
16.2	16.6	11.3	163.6
18.5	18.4	11.3	173.3

AVERAGE CLASS SIZE (as of the first school day in May)											
Grades	K	1	2	3	4	5	6	7	8	9 - 12	Overall
School	20.2	20.3	20.5	21.3	21.3	24.0	23.3	23.5	24.9		22.4
District	19.9	20.0	22.4	21.6	21.2	22.3	23.0	22.8	22.9		20.4
State	20.7	21.6	21.9	22.4	22.7	23.1	22.7	21.8	22.2		21.2

TIME DEVOTED TO TEACHING CORE SUBJECTS (Minutes Per Day)												
Grades	Mathematics			Science			English/Language Arts			Social Science		
	3	6	8	3	6	8	3	6	8	3	6	8
School	120	120	120	20	20	20	120	120	120	20	20	20
District	80	84	83	27	39	38	135	91	88	27	39	38
State	65	58	55	31	44	46	139	100	89	30	43	45

TEACHER INFORMATION (Full-Time Equivalents)											
	White	Black	Hispanic	Asian	Native Hawaiian/ Pacific islander	American Indian	Two or More Races	Unknown	Male	Female	Total Number
State	82.5	6.4	5.7	1.4	0.1	0.2	0.8	3.0	23.2	76.8	129,668

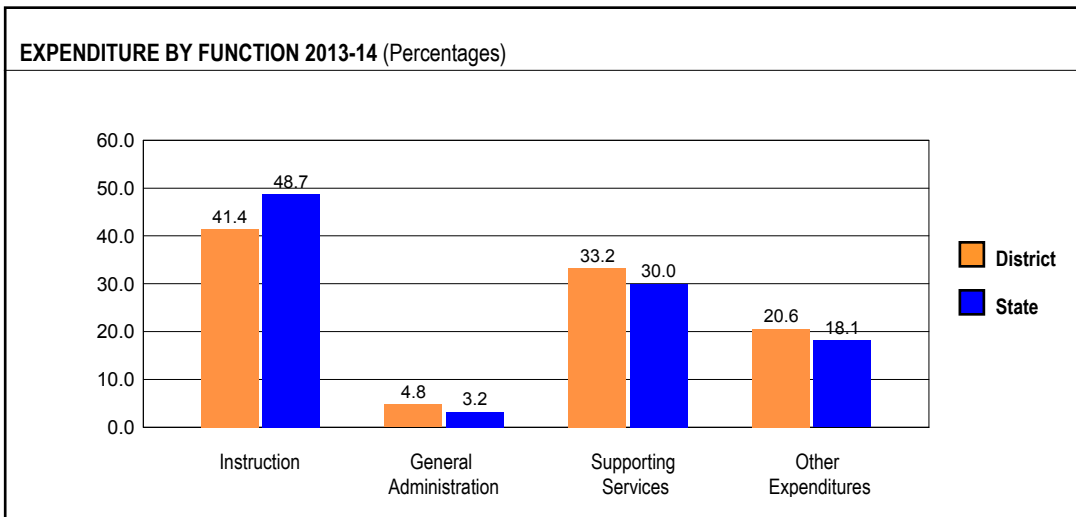
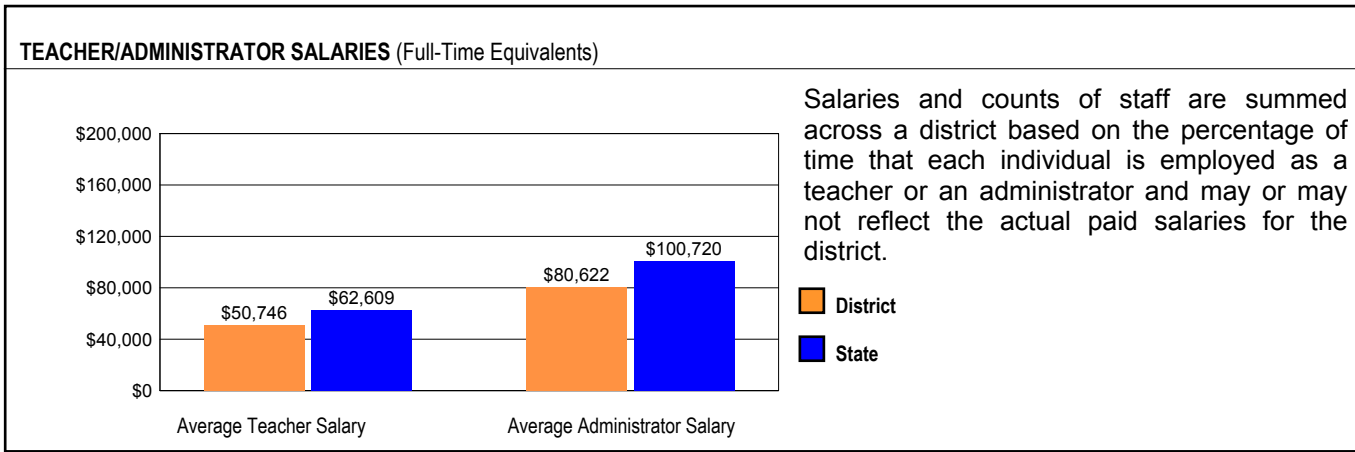
TEACHER INFORMATION (Continued)					
	Average Teaching Experience (Years)	% of Teachers with Bachelor's Degrees	% of Teachers with Master's & Above	% of Teachers with Emergency or Provisional Credentials	% of Classes Not Taught by Highly Qualified Teachers
School	--	--	--	0.0	4.7
District		48.2	50.9	1.2	1.7
State		38.4	61.1	0.6	0.8

The No Child Left Behind Act requires that information for certain data elements be disaggregated by high- and low-poverty schools. Poverty (low-income) is defined on page 1 of all report cards. High- and low-poverty schools include those in the top and bottom quarters of the poverty distribution of schools in the state.

Some teacher/administrator data are not collected at the school level.

TEACHER RETENTION RATE		PRINCIPAL TURNOVER (Count)	
School	49.2	School	3.0
District	78.3	District	2.5
State	85.0	State	1.9

SCHOOL DISTRICT FINANCES



REVENUE BY SOURCE 2013-14

	District	District %	State %
Local Property Taxes	\$78,081,715	45.2	61.7
Other Local Funding	\$7,490,951	4.3	4.4
General State Aid	\$44,578,285	25.8	16.4
Other State Funding	\$16,328,619	9.4	9.6
Federal Funding	\$26,320,594	15.2	7.8
TOTAL	\$172,800,164		

EXPENDITURE BY FUND 2013-14

	District	District %	State %
Education	\$127,497,887	65.8	73.4
Operations & Maintenance	\$13,076,033	6.7	6.3
Transportation	\$8,932,238	4.6	3.7
Debt Service	\$15,775,214	8.1	8.0
Tort	\$6,305,295	3.3	1.2
Municipal Retirement/ Social Security	\$6,487,408	3.3	2.1
Fire Prevention & Safety	\$486,678	0.3	0.5
Capital Projects	\$15,255,878	7.9	4.7
TOTAL	\$193,816,631		

OTHER FINANCIAL INDICATORS

	2012 Equalized Assessed Valuation per Pupil	2012 Total School Tax Rate per \$100	2013-14 Instructional Expenditure per Pupil	2013-14 Operating Expenditure per Pupil
District	\$116,614	4.98	\$6,979	\$13,662
State	**	**	\$7,419	\$12,521

** Due to the way Illinois school districts are configured, state averages for equalized assessed valuation per pupil and total school tax rate per \$100 are not provided.

Equalized assessed valuation includes all computed property values upon which a district's local tax rate is calculated.

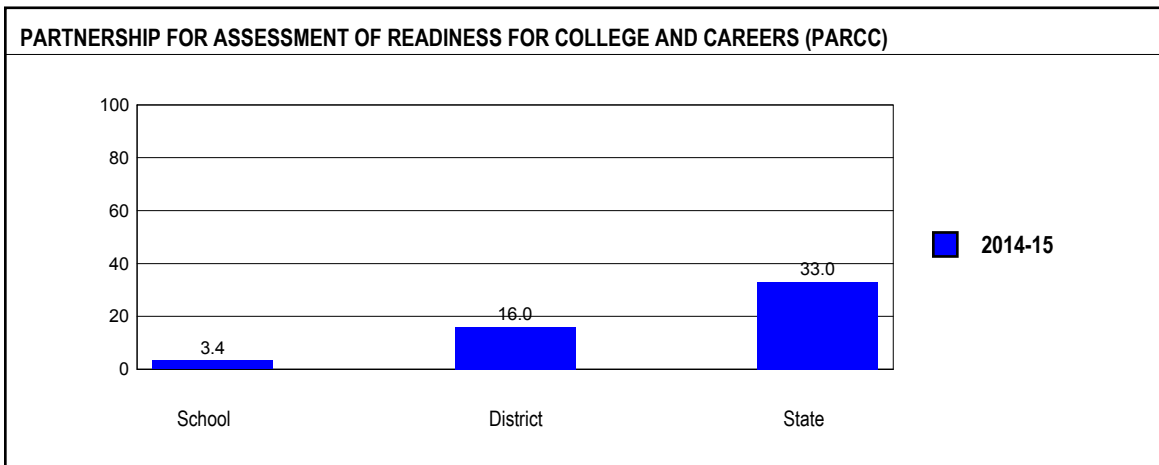
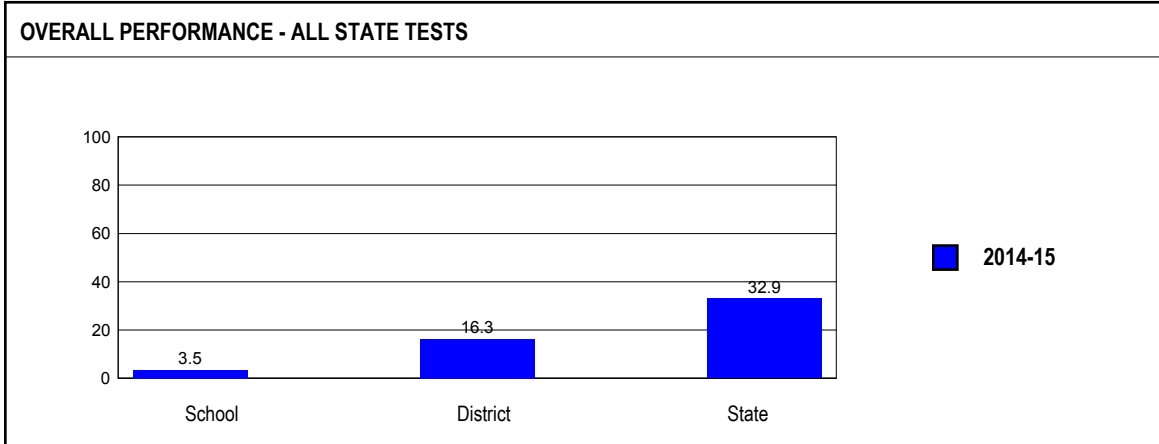
Total school tax rate is a district's total tax rate as it appears on local property tax bills.

Instructional expenditure per pupil includes the direct costs of teaching pupils or the interaction between teachers and pupils.

Operating expenditure per pupil includes the gross operating cost of a school district excluding summer school, adult education, bond principal retired, and capital expenditures.

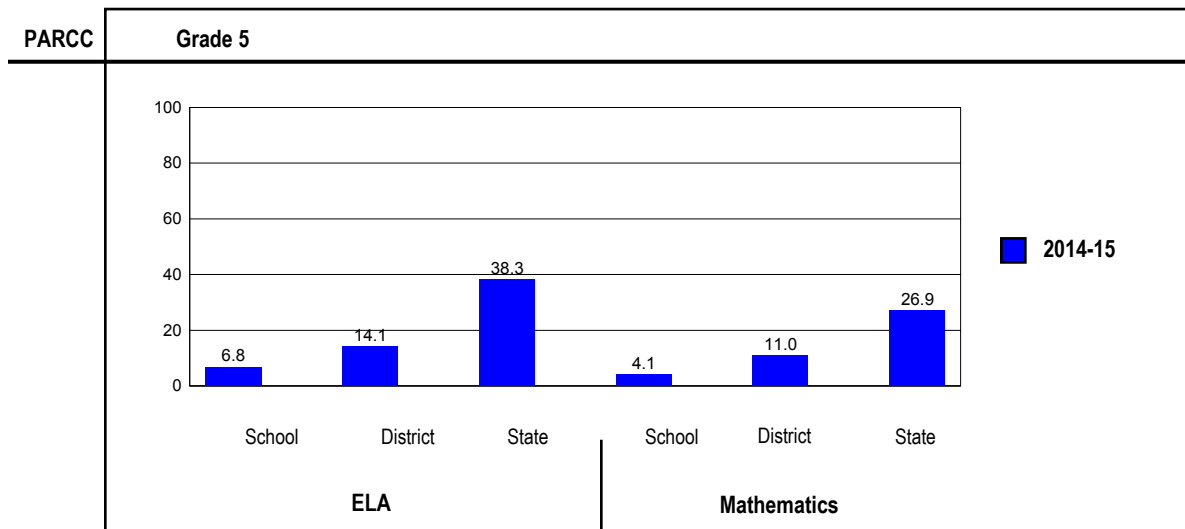
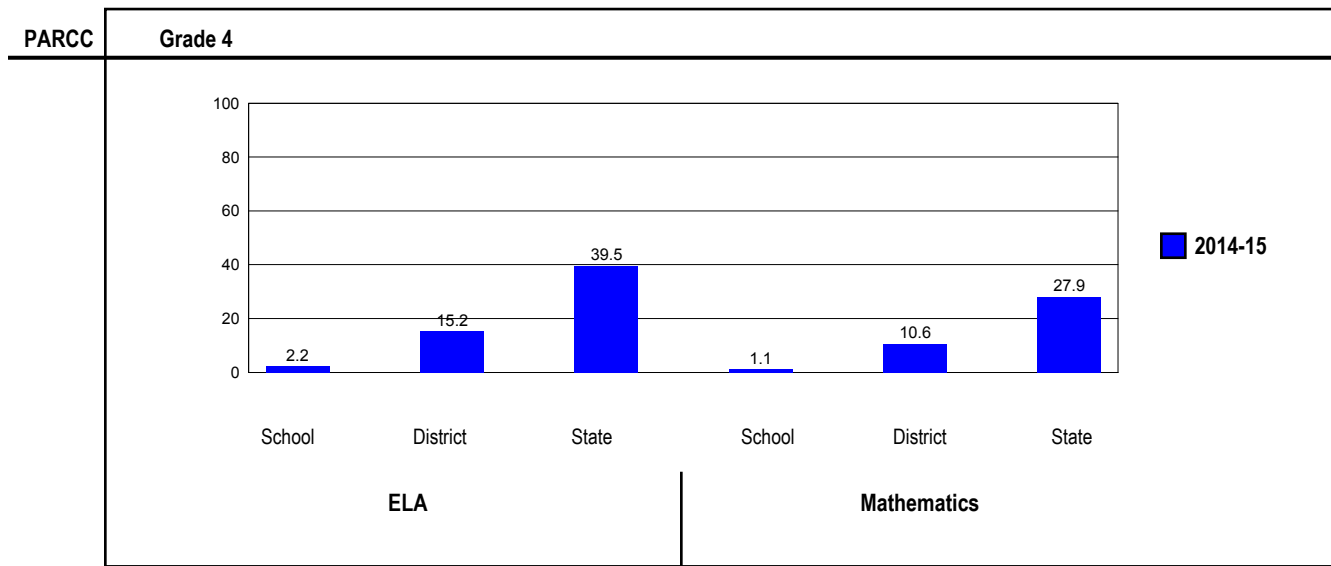
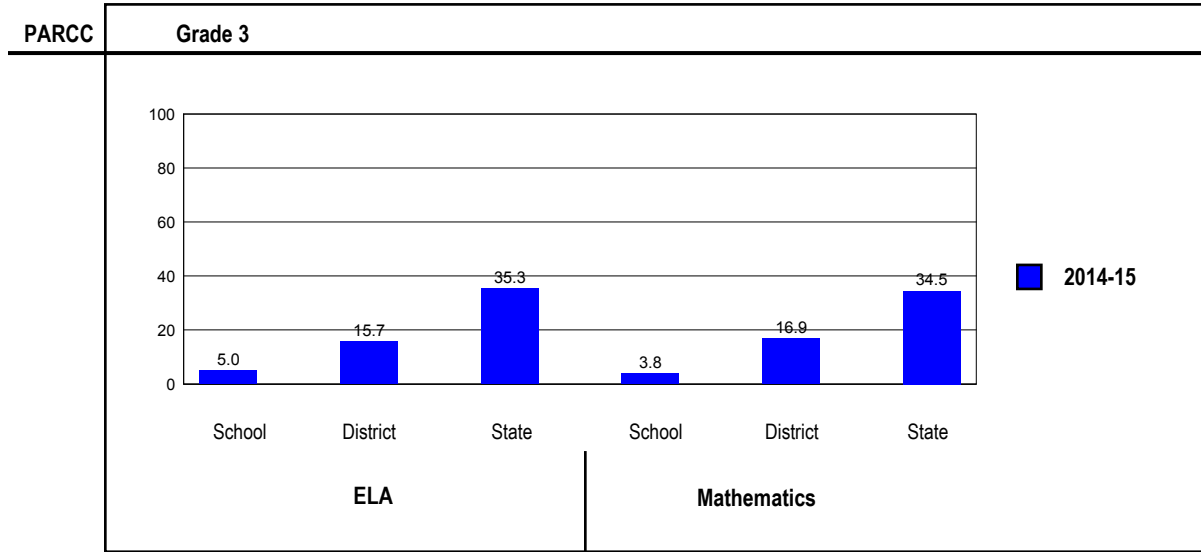
ACADEMIC PERFORMANCE**OVERALL STUDENT PERFORMANCE**

These charts present the overall percentage of state test scores categorized as meeting or exceeding the PARCC expectations or DLM-AA Standards for your district, and the state.



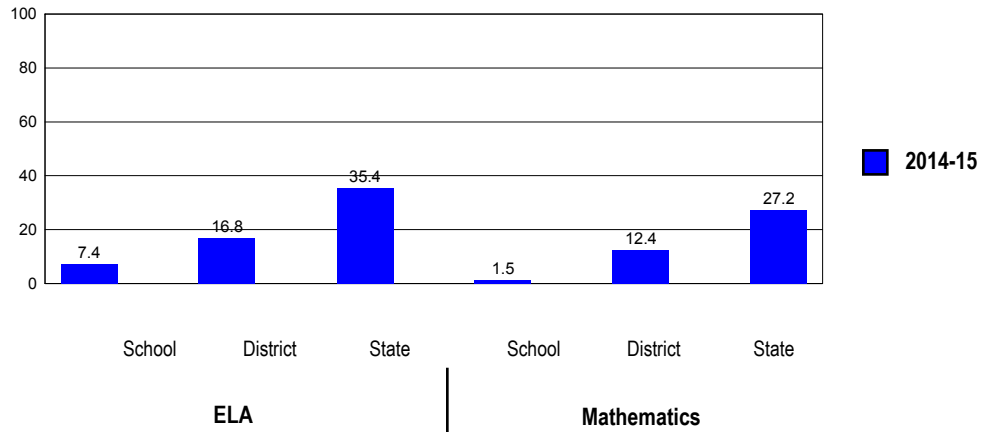
PARCC PERFORMANCE

These charts present the overall percentage of state test scores categorized as meeting or exceeding the PARCC expectations or DLM-AA Standards for your district, and the state.



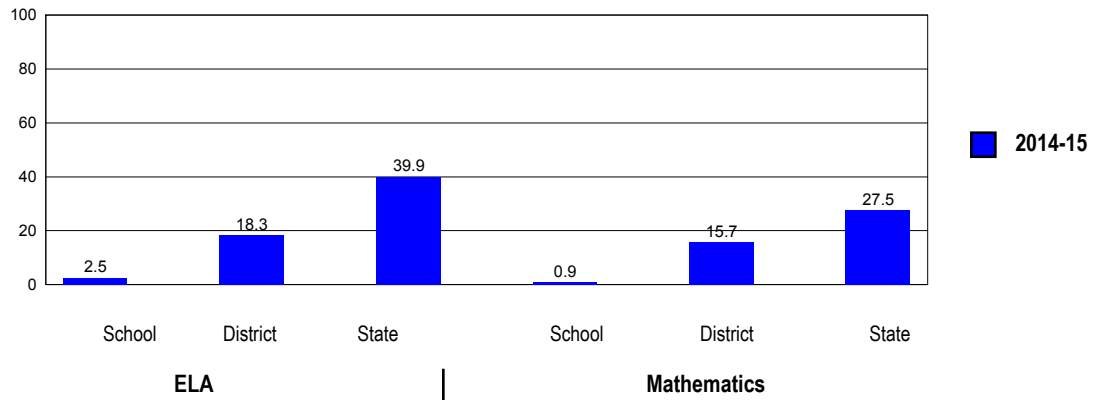
PARCC

Grade 6



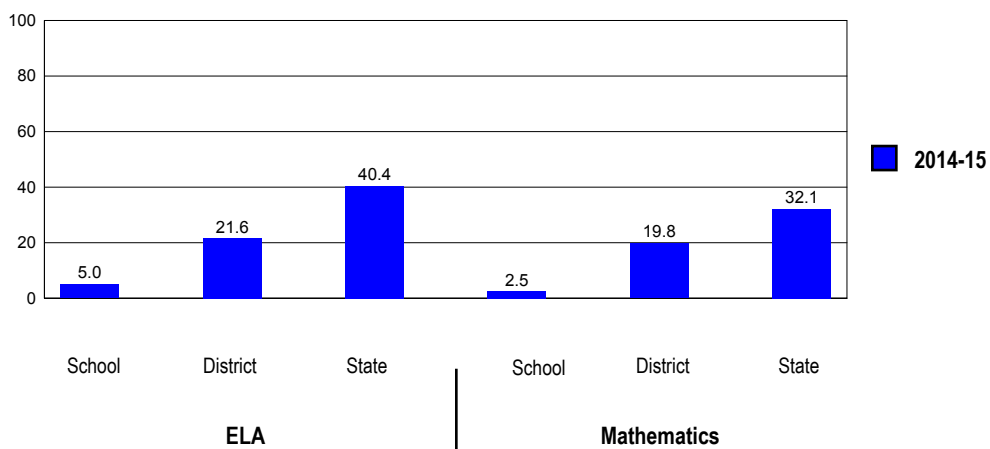
PARCC

Grade 7



PARCC

Grade 8



PERFORMANCE ON STATE ASSESSMENTS

The PARCC is administered to students in grade 3 through 8 and high school. The DLM-AA is administered to students in grade 3 through 8 and 11 with disabilities whose Individualized Education Programs (IEPs) indicate that participation in the PARCC would not be appropriate.

Students with disabilities have an IEP (No Child Left Behind Act). An IEP is a written plan for a child with a disability who is eligible to receive special education services under the Individuals with Disabilities Education Act.

In order to protect students' identities, test data for groups of fewer than ten students are not reported.

PERCENTAGE OF STUDENTS NOT TESTED IN STATE TESTING PROGRAMS FOR ELA															
		Gender			Racial/Ethnic Background							LEP	Migrant	Students with Disabilities	Economically Disadvantaged
		All	Male	Female	White	Black	Hispanic	Asian	Native Hawaiian/Pacific Islander	American Indian	Two or More Races				
School	*Enrollment	578	289	289	57	381	103	0	0	1	36	63	0	96	513
	Reading	4.5	4.8	4.2	3.5	5.2	1.0				8.3	1.6		3.1	3.9
District	*Enrollment	6,853	3,566	3,287	1,558	3,876	693	115	10	24	577	303	10	1,125	5,047
	Reading	4.6	4.8	4.4	3.6	5.3	4.6	3.5	0.0	0.0	2.9	4.3	10.0	5.9	4.4
State	*Enrollment	1,051,644	539,225	512,413	519,457	180,273	267,111	48,402	1,065	3,047	32,282	80,472	208	147,514	562,211
	Reading	4.4	4.4	4.4	3.6	6.4	4.9	3.1	5.4	5.1	4.5	4.0	1.4	6.7	4.8

* Enrollment as reported during the testing windows for grades 3 - 8 and high school.

Number of LEP Students who have attended schools in the U.S. for less than 12 months and are not assessed on the State's reading/language arts test: 0

PERCENTAGE OF STUDENTS NOT TESTED IN STATE TESTING PROGRAMS FOR MATHEMATICS															
		Gender			Racial/Ethnic Background							LEP	Migrant	Students with Disabilities	Economically Disadvantaged
		All	Male	Female	White	Black	Hispanic	Asian	Native Hawaiian/Pacific Islander	American Indian	Two or More Races				
School	*Enrollment	574	288	286	57	377	103	0	0	1	36	63	0	94	509
	Mathematics	4.4	3.8	4.9	3.5	5.3	1.0				5.6	1.6		3.2	3.7
District	*Enrollment	6,650	3,462	3,188	1,510	3,762	672	116	9	25	556	300	12	1,063	4,914
	Mathematics	3.1	3.2	3.0	2.3	3.5	3.3	2.6		8.0	2.3	2.3	16.7	3.2	3.0
State	*Enrollment	1,030,870	528,245	502,619	503,821	178,766	265,694	47,031	1,068	2,998	31,485	84,309	222	144,880	557,528
	Mathematics	4.4	4.4	4.3	3.4	6.5	5.0	2.8	5.8	4.5	4.3	4.6	4.5	6.6	4.7

* Enrollment as reported during the testing windows for grades 3 - 8 and high school.

Partnership for Assessment of Readiness for College and Careers (PARCC)

Each Performance Level is a broad, categorical level defined by a student's overall scale score and used to report overall student performance by describing how well students met the expectations for their grade level/course. Each Performance Level is defined by a range of overall scale scores for the assessment. There are five Performance Levels for PARCC assessments:

- Level 1: Did not yet meet expectations
- Level 2: Partially met expectations
- Level 3: Approached expectations
- Level 4: Met expectations
- Level 5: Exceeded expectations

Students performing at levels 4 and 5 met or exceeded expectations, have demonstrated readiness for the next grade level/course and, ultimately, are on track for college and careers. Performance Level Descriptors (PLDs) describe the knowledge, skills, and practices that students should know and be able to demonstrate at each Performance Level in each content area (ELA/L and mathematics), and at each grade level/course. PLDs are available at <http://avocet.pearson.com/PARCC/Home>.

Grade 3

Grade 3 - All

Levels	ELA					Mathematics				
	1	2	3	4	5	1	2	3	4	5
School	58.8	27.5	8.8	5.0	0.0	46.8	35.4	13.9	3.8	0.0
District	41.0	24.6	18.7	15.0	0.7	31.6	28.8	22.7	14.5	2.4
State	20.1	21.0	23.5	32.4	2.9	14.1	23.6	27.8	29.1	5.4

Grade 3 - Gender

Levels	ELA					Mathematics					
	1	2	3	4	5	1	2	3	4	5	
Male	School	62.5	30.0	7.5	0.0	0.0	52.5	37.5	7.5	2.5	0.0
	District	46.2	24.9	17.9	10.8	0.2	33.9	29.3	21.2	13.9	1.7
	State	23.1	22.0	23.6	29.2	2.0	15.2	23.4	26.8	28.7	5.8
Female	School	55.0	25.0	10.0	10.0	0.0	41.0	33.3	20.5	5.1	0.0
	District	35.1	24.2	19.6	19.8	1.2	28.9	28.1	24.5	15.3	3.2
	State	17.0	19.9	23.5	35.7	3.9	13.0	23.8	28.8	29.4	5.0

Grade 4**Grade 4 - All**

Levels	ELA					Mathematics				
	1	2	3	4	5	1	2	3	4	5
School	45.6	31.1	21.1	2.2	0.0	63.3	33.3	2.2	1.1	0.0
District	31.3	28.8	24.7	13.0	2.2	38.2	33.5	17.7	9.4	1.2
State	10.9	19.7	29.9	32.9	6.5	13.7	29.4	29.1	25.3	2.6

Grade 4 - Gender

Levels	ELA					Mathematics					
	1	2	3	4	5	1	2	3	4	5	
Male	School	52.8	24.5	20.8	1.9	0.0	60.4	35.8	1.9	1.9	0.0
	District	36.9	28.6	23.1	10.4	0.9	42.6	32.6	15.5	8.5	0.8
	State	13.4	22.0	30.4	29.7	4.6	15.1	29.3	27.6	25.2	2.7
Female	School	35.1	40.5	21.6	2.7	0.0	67.6	29.7	2.7	0.0	0.0
	District	25.0	29.0	26.5	15.9	3.6	33.3	34.5	20.0	10.4	1.7
	State	8.4	17.4	29.4	36.4	8.5	12.1	29.5	30.5	25.4	2.4

Grade 4 - Racial/Ethnic Background

Levels	ELA					Mathematics					
	1	2	3	4	5	1	2	3	4	5	
White	School	46.2	30.8	23.1	0.0	0.0	53.8	38.5	7.7	0.0	0.0
	District	20.5	19.0	26.3	27.3	6.8	21.8	25.7	23.3	24.3	4.9
	State	6.5	15.0	29.5	40.3	8.8	8.4	23.8	31.2	33.4	3.2
Black	School	49.1	34.5	14.5	1.8	0.0	74.5	23.6	1.8	0.0	0.0
	District	38.4	33.5	21.4	6.5	0.2	48.6	34.7	13.7	3.0	0.0
	State	19.6	28.5	30.7	19.3	1.9	26.1	39.2	24.0	10.3	0.4
Hispanic	School	20.0	26.7	46.7	6.7	0.0	26.7	66.7	0.0	6.7	0.0
	District	24.0	28.8	29.8	15.4	1.9	24.5	44.1	20.6	10.8	0.0
	State	15.4	25.3	32.0	24.7	2.6	17.5	37.3	29.3	15.2	0.6
Asian	School										
	District	5.6	5.6	33.3	38.9	16.7	0.0	27.8	22.2	38.9	11.1
	State	3.0	8.3	19.8	49.7	19.1	3.3	10.9	23.4	48.9	13.5
Native Hawaiian/Pacific Islander	School										
	District										
	State	7.1	14.7	29.5	39.1	9.6	9.4	24.5	23.9	36.5	5.7
American Indian	School										
	District										
	State	16.0	22.3	31.5	26.3	3.9	16.8	34.6	29.0	18.5	1.1
Two or More Races	School										
	District	25.3	26.3	31.6	14.7	2.1	32.3	34.4	23.7	9.7	0.0
	State	9.3	18.7	29.4	34.2	8.3	14.1	27.4	28.3	26.4	3.7

Grade 4 - Limited-English-Proficient

Levels	ELA					Mathematics				
	1	2	3	4	5	1	2	3	4	5
School	25.0	25.0	50.0	0.0	0.0	33.3	66.7	0.0	0.0	0.0
District	35.9	32.8	25.0	6.3	0.0	33.3	47.6	15.9	3.2	0.0
State	33.3	38.4	22.6	5.5	0.2	31.8	45.2	18.3	4.5	0.2

Grade 4 - Students with Disabilities

Levels	ELA					Mathematics					
	1	2	3	4	5	1	2	3	4	5	
IEP	School	78.6	14.3	7.1	0.0	0.0	78.6	14.3	7.1	0.0	0.0
	District	69.1	18.5	9.3	2.5	0.6	59.3	30.9	7.4	2.5	0.0
	State	38.3	31.4	19.5	9.7	1.1	37.9	37.4	16.3	8.0	0.5
Non-IEP	School	39.5	34.2	23.7	2.6	0.0	60.5	36.8	1.3	1.3	0.0
	District	24.0	30.8	27.7	15.0	2.5	34.1	34.0	19.6	10.8	1.4
	State	6.7	17.9	31.5	36.6	7.4	9.9	28.2	31.0	28.0	2.9

Grade 4 - Economically Disadvantaged

Levels	Reading					Mathematics					
	1	2	3	4	5	1	2	3	4	5	
Free/Reduced Price Lunch	School	43.0	32.9	21.5	2.5	0.0	63.3	32.9	2.5	1.3	0.0
	District	34.0	33.1	24.0	8.0	0.8	43.4	35.4	14.9	6.2	0.1
	State	16.2	26.3	32.1	23.1	2.3	20.1	37.5	27.8	14.0	0.6
Not Eligible	School	63.6	18.2	18.2	0.0	0.0	63.6	36.4	0.0	0.0	0.0
	District	22.6	15.1	26.8	28.9	6.7	21.8	27.6	26.4	19.7	4.6
	State	4.3	11.4	27.1	45.3	11.9	5.6	19.1	30.7	39.6	5.0

Grade 5**Grade 5 - All**

Levels	ELA					Mathematics				
	1	2	3	4	5	1	2	3	4	5
School	37.0	43.8	12.3	6.8	0.0	24.3	44.6	27.0	4.1	0.0
District	30.3	31.3	24.3	12.9	1.2	29.8	36.6	22.6	10.6	0.4
State	10.8	21.4	29.4	35.6	2.7	13.2	30.2	29.7	23.6	3.3

Grade 5 - Gender

Levels	ELA					Mathematics					
	1	2	3	4	5	1	2	3	4	5	
Male	School	46.9	43.8	9.4	0.0	0.0	29.4	50.0	17.6	2.9	0.0
	District	36.0	31.8	20.7	10.7	0.8	32.7	36.5	20.9	9.1	0.8
	State	13.4	23.9	29.7	31.4	1.6	14.9	30.6	28.0	22.9	3.7
Female	School	29.3	43.9	14.6	12.2	0.0	20.0	40.0	35.0	5.0	0.0
	District	24.7	30.8	27.8	15.1	1.6	26.9	36.7	24.3	12.2	0.0
	State	8.1	18.9	29.2	40.0	3.9	11.5	29.8	31.4	24.3	3.0

Grade 5 - Racial/Ethnic Background

Levels	ELA					Mathematics					
	1	2	3	4	5	1	2	3	4	5	
White	School	13.9	24.9	26.8	30.1	4.3	14.8	22.0	32.1	29.2	1.9
	District	6.9	16.7	29.4	43.7	3.4	8.3	24.9	32.3	30.4	4.1
	State										
Black	School	46.7	46.7	2.2	4.4	0.0	33.3	46.7	17.8	2.2	0.0
	District	38.9	34.7	20.5	5.9	0.0	39.3	41.0	15.7	4.0	0.0
	State	19.4	30.7	29.2	20.0	0.8	25.5	40.7	23.9	9.3	0.5
Hispanic	School	25.0	40.0	20.0	15.0	0.0	5.0	40.0	45.0	10.0	0.0
	District	21.4	29.9	34.2	12.8	1.7	13.7	41.9	33.3	11.1	0.0
	State	14.3	27.2	31.4	25.9	1.2	16.8	37.2	29.7	15.4	0.9
Asian	School										
	District										
	State	3.9	8.6	21.1	56.2	10.2	3.2	11.7	22.9	44.6	17.5
Native Hawaiian/Pacific Islander	School										
	District										
	State	6.1	7.8	28.7	52.2	5.2	4.3	20.5	31.6	37.6	6.0
American Indian	School										
	District										
	State	15.8	20.8	28.3	33.0	2.1	12.4	36.1	31.7	18.6	1.3
Two or More Races	School	23.6	27.8	31.9	15.3	1.4	26.0	34.2	32.9	6.8	0.0
	District	9.2	20.5	27.8	39.0	3.5	12.1	29.6	28.4	25.1	4.8
	State										

Grade 5 - Limited-English-Proficient

Levels	ELA					Mathematics				
	1	2	3	4	5	1	2	3	4	5
School	25.0	58.3	16.7	0.0	0.0	0.0	58.3	41.7	0.0	0.0
District	39.5	41.9	18.6	0.0	0.0	27.9	51.2	20.9	0.0	0.0
State	40.7	41.2	15.0	3.2	0.0	34.8	45.4	16.0	3.4	0.3

Grade 5 - Economically Disadvantaged

Levels	ELA					Mathematics					
	1	2	3	4	5	1	2	3	4	5	
Free/Reduced Price Lunch	School	34.9	42.9	14.3	7.9	0.0	25.0	45.3	25.0	4.7	0.0
	District	34.4	34.1	23.5	7.8	0.3	34.3	40.3	20.0	5.5	0.0
	State	16.0	28.4	31.1	23.5	0.9	19.5	38.4	27.9	13.4	0.8
Not Eligible	School	50.0	50.0	0.0	0.0	0.0	20.0	40.0	40.0	0.0	0.0
	District	15.8	21.6	27.0	31.1	4.5	14.3	23.7	31.7	28.6	1.8
	State	4.5	13.0	27.4	50.2	4.9	5.6	20.3	31.9	35.8	6.4

Grade 6**Grade 6 - All**

Levels	ELA					Mathematics				
	1	2	3	4	5	1	2	3	4	5
School	35.3	26.5	30.9	7.4	0.0	39.7	45.6	13.2	1.5	0.0
District	26.2	32.1	24.9	14.5	2.3	30.4	37.3	19.9	11.4	1.0
State	11.4	21.6	31.6	31.2	4.2	12.7	29.7	30.5	24.0	3.2

Grade 6 - Gender

Levels	ELA					Mathematics					
	1	2	3	4	5	1	2	3	4	5	
Male	School	48.6	24.3	24.3	2.7	0.0	44.7	39.5	13.2	2.6	0.0
	District	35.2	28.4	23.5	12.4	0.6	31.9	37.7	19.8	9.6	1.1
	State	14.8	24.9	31.8	25.9	2.6	14.3	30.1	29.0	23.2	3.4
Female	School	19.4	29.0	38.7	12.9	0.0	33.3	53.3	13.3	0.0	0.0
	District	16.7	36.0	26.5	16.7	4.1	28.9	36.8	20.0	13.4	0.9
	State	7.8	18.2	31.4	36.8	5.8	11.0	29.2	32.0	24.8	2.9

Grade 6 - Racial/Ethnic Background

Levels	ELA					Mathematics					
	1	2	3	4	5	1	2	3	4	5	
White	School										
	District	13.8	24.0	25.5	29.1	7.7	12.8	26.0	27.6	30.6	3.1
	State	6.4	16.6	32.2	39.2	5.5	7.4	23.5	33.5	31.7	4.0
Black	School	37.0	21.7	37.0	4.3	0.0	43.5	45.7	10.9	0.0	0.0
	District	33.3	36.5	21.9	8.3	0.0	40.9	41.4	15.6	2.1	0.0
	State	23.0	31.9	28.9	15.3	1.0	25.6	41.1	24.3	8.7	0.4
Hispanic	School	25.0	33.3	16.7	25.0	0.0	16.7	50.0	25.0	8.3	0.0
	District	15.2	33.7	37.0	12.0	2.2	11.8	48.4	24.7	15.1	0.0
	State	15.0	27.2	34.2	22.2	1.4	16.3	37.6	30.3	15.0	0.7
Asian	School										
	District	8.3	0.0	25.0	58.3	8.3	15.4	7.7	23.1	46.2	7.7
	State	3.4	8.4	21.5	51.5	15.3	3.1	10.7	22.6	45.8	17.8
Native Hawaiian/Pacific Islander	School										
	District										
	State	5.5	15.1	37.0	37.0	5.5	8.8	25.2	28.6	34.0	3.4
American Indian	School										
	District										
	State	12.3	20.9	35.2	28.2	3.4	13.5	33.6	31.5	19.1	2.3
Two or More Races	School										
	District	26.3	26.3	28.9	14.5	3.9	30.3	30.3	23.7	13.2	2.6
	State	9.7	20.4	30.4	33.7	5.9	12.0	29.2	28.8	25.4	4.6

Grade 6 - Students with Disabilities

Levels	ELA					Mathematics					
	1	2	3	4	5	1	2	3	4	5	
IEP	School	90.0	10.0	0.0	0.0	0.0	80.0	20.0	0.0	0.0	0.0
	District	69.6	25.0	5.4	0.0	0.0	57.5	38.4	2.7	1.4	0.0
	State	43.1	33.5	17.1	5.8	0.5	39.6	40.3	14.7	5.1	0.4
Non-IEP	School	25.9	29.3	36.2	8.6	0.0	32.8	50.0	15.5	1.7	0.0
	District	17.8	33.4	28.7	17.3	2.8	25.3	37.0	23.2	13.4	1.2
	State	6.7	19.9	33.8	35.0	4.7	8.7	28.1	32.8	26.8	3.6

Grade 6 - Economically Disadvantaged

Levels	ELA					Mathematics					
	1	2	3	4	5	1	2	3	4	5	
Free/Reduced Price Lunch	School	33.3	24.6	33.3	8.8	0.0	36.8	45.6	15.8	1.8	0.0
	District	30.8	32.9	25.6	10.0	0.7	35.5	39.2	17.8	7.5	0.0
	State	17.4	28.7	32.7	20.0	1.3	19.1	38.5	28.6	13.2	0.7
Not Eligible	School	45.5	36.4	18.2	0.0	0.0	54.5	45.5	0.0	0.0	0.0
	District	11.9	29.2	22.8	28.8	7.3	14.6	31.1	26.5	23.7	4.1
	State	4.3	13.3	30.3	44.6	7.6	5.1	19.2	32.7	36.8	6.2

Grade 7**Grade 7 - All**

Levels	ELA					Mathematics				
	1	2	3	4	5	1	2	3	4	5
School	52.5	27.1	17.8	1.7	0.8	40.9	47.8	10.4	0.9	0.0
District	34.9	27.2	19.6	15.2	3.1	24.2	37.6	22.5	13.8	2.0
State	14.3	19.0	26.9	30.5	9.4	9.8	28.4	34.3	24.6	2.9

Grade 7 - Gender

Levels	ELA					Mathematics					
	1	2	3	4	5	1	2	3	4	5	
Male	School	63.9	19.7	14.8	1.6	0.0	50.0	38.3	11.7	0.0	0.0
	District	43.1	26.3	15.6	14.0	1.0	27.3	36.0	21.7	12.7	2.3
	State	18.8	21.7	27.2	26.1	6.2	11.5	28.7	32.6	24.0	3.3
Female	School	40.4	35.1	21.1	1.8	1.8	30.9	58.2	9.1	1.8	0.0
	District	25.7	28.3	24.1	16.6	5.4	20.8	39.3	23.4	15.0	1.6
	State	9.5	16.2	26.5	35.0	12.8	8.1	28.1	36.0	25.3	2.5

Grade 7 - Racial/Ethnic Background

Levels	ELA					Mathematics					
	1	2	3	4	5	1	2	3	4	5	
White	School	40.0	40.0	20.0	0.0	0.0	40.0	60.0	0.0	0.0	0.0
	District	18.0	19.0	21.5	33.7	7.8	9.7	20.9	32.0	32.5	4.9
	State	8.9	15.1	26.6	37.0	12.4	6.1	22.1	36.3	31.9	3.5
Black	School	61.0	24.4	13.4	1.2	0.0	44.3	45.6	10.1	0.0	0.0
	District	47.1	29.8	16.3	6.5	0.2	33.3	44.3	18.2	4.3	0.0
	State	27.3	27.6	26.1	17.0	2.1	19.6	41.9	28.8	9.5	0.2
Hispanic	School	38.9	33.3	27.8	0.0	0.0	33.3	55.6	11.1	0.0	0.0
	District	19.5	35.6	26.4	18.4	0.0	18.0	42.7	25.8	12.4	1.1
	State	18.4	23.6	29.7	24.1	4.2	12.2	35.5	35.5	16.1	0.7
Asian	School	4.5	0.0	31.8	45.5	18.2	4.5	13.6	18.2	40.9	22.7
	District	4.7	7.3	17.8	41.4	28.8	2.9	10.7	25.2	44.5	16.7
	State										
Native Hawaiian/Pacific Islander	School										
	District										
	State	7.9	15.1	22.2	42.9	11.9	3.9	20.3	37.5	32.8	5.5
American Indian	School										
	District										
	State	15.9	20.5	31.1	27.2	5.3	9.7	32.5	39.0	17.3	1.4
Two or More Races	School										
	District	23.6	30.6	25.0	11.1	9.7	15.3	38.9	23.6	19.4	2.8
	State	12.9	17.8	25.5	31.1	12.7	9.6	27.2	32.6	25.8	4.8

Grade 7 - Students with Disabilities

Levels	ELA					Mathematics					
	1	2	3	4	5	1	2	3	4	5	
IEP	School	90.0	10.0	0.0	0.0	0.0	84.2	15.8	0.0	0.0	0.0
	District	79.6	15.0	2.7	2.7	0.0	57.8	33.3	8.2	0.7	0.0
	State	51.3	27.4	14.4	6.0	0.9	38.4	41.6	15.0	4.4	0.5
Non-IEP	School	44.9	30.6	21.4	2.0	1.0	32.3	54.2	12.5	1.0	0.0
	District	26.3	29.6	22.9	17.6	3.7	17.7	38.4	25.2	16.3	2.4
	State	8.8	17.8	28.7	34.1	10.6	5.6	26.4	37.1	27.6	3.3

Grade 7 - Economically Disadvantaged

Levels	ELA					Mathematics				
	1	2	3	4	5	1	2	3	4	5
Free/Reduced Price Lunch										
School	52.3	28.0	17.8	0.9	0.9	40.4	48.1	10.6	1.0	0.0
District	40.3	30.6	19.0	9.7	0.3	28.6	42.9	20.9	7.4	0.3
State	21.2	25.1	28.5	21.7	3.5	14.7	37.3	33.4	14.0	0.6
Not Eligible										
School	54.5	18.2	18.2	9.1	0.0	45.5	45.5	9.1	0.0	0.0
District	19.9	17.8	21.2	30.3	10.8	12.3	23.0	26.7	31.3	6.6
State	6.5	12.3	25.1	40.2	16.0	4.4	18.4	35.3	36.5	5.5

Grade 8**Grade 8 - All**

Levels	ELA					Mathematics				
	1	2	3	4	5	1	2	3	4	5
School	51.7	30.0	13.3	5.0	0.0	60.8	27.5	9.2	2.5	0.0
District	28.9	26.2	23.3	20.4	1.2	36.4	26.7	17.1	18.3	1.5
State	14.0	18.9	26.7	34.1	6.3	19.7	23.8	24.4	28.2	3.9

Grade 8 - Gender

Levels	ELA					Mathematics				
	1	2	3	4	5	1	2	3	4	5
Male										
School	64.7	25.5	9.8	0.0	0.0	74.5	17.6	7.8	0.0	0.0
District	35.6	26.9	21.4	15.5	0.7	41.5	25.3	14.4	16.6	2.2
State	18.6	21.9	27.2	28.4	3.9	22.5	24.0	23.0	26.4	4.2
Female										
School	42.0	33.3	15.9	8.7	0.0	50.7	34.8	10.1	4.3	0.0
District	22.1	25.4	25.2	25.4	1.8	31.2	28.1	19.8	20.0	0.9
State	9.1	15.9	26.1	40.1	8.8	16.7	23.7	25.9	30.2	3.6

Grade 8 - Racial/Ethnic Background

Levels	ELA					Mathematics				
	1	2	3	4	5	1	2	3	4	5
White										
School	41.7	50.0	0.0	8.3	0.0	50.0	41.7	8.3	0.0	0.0
District	13.7	17.5	26.4	40.1	2.4	20.6	18.2	20.1	38.3	2.8
State	8.8	15.2	26.3	41.4	8.3	12.9	20.1	26.4	35.9	4.7
Black										
School	58.8	26.3	15.0	0.0	0.0	63.8	27.5	8.8	0.0	0.0
District	39.0	31.0	20.9	8.7	0.4	48.0	29.9	15.5	6.4	0.2
State	26.9	27.3	26.6	17.9	1.2	37.7	30.6	20.0	11.3	0.4
Hispanic										
School	31.6	47.4	10.5	10.5	0.0	68.4	10.5	10.5	10.5	0.0
District	23.1	32.1	24.4	20.5	0.0	29.1	36.7	15.2	19.0	0.0
State	17.6	23.3	29.3	27.3	2.5	24.1	29.2	24.9	20.6	1.2
Asian										
School										
District	0.0	0.0	42.9	52.4	4.8	4.8	4.8	19.0	47.6	23.8
State	4.6	7.6	17.5	48.5	21.8	5.4	10.8	17.2	46.0	20.5
Native Hawaiian/Pacific Islander										
School										
District										
State	12.1	14.3	22.9	37.1	13.6	18.9	17.5	24.5	28.7	10.5
American Indian										
School										
District										
State	15.2	25.5	29.3	26.3	3.8	21.0	31.1	25.8	20.7	1.5
Two or More Races										
School										
District	20.2	21.3	23.6	32.6	2.2	22.7	26.1	19.3	30.7	1.1
State	12.9	17.2	25.6	35.4	9.0	18.5	24.0	22.5	29.9	5.1

